

# SKF Extreme temperature, extreme condition bearing grease

## LGET 2

SKF LGET 2 is a synthetic fluorinated oil based grease, using a PTFE thickener. It is especially suitable for applications at extremely high temperatures from 200 °C (390 °F) up to 260 °C (500 °F).

- Long life in aggressive environments such as very reactive areas with a presence of high purity gaseous oxygen and hexane
- Excellent oxidation resistance
- Good corrosion resistance
- Excellent water and steam resistance

### Typical applications

- Bakery equipment (ovens)
- Kiln truck wheels
- Load rollers in copying machines
- Wafer baking machines
- Textile dryers
- Film stretching tenders
- Electric motors running at extreme temperatures
- Emergency / hot fans
- Vacuum pumps



### Available pack sizes

Packsize	Designation
50 g syringe	LGET 2/0.050
1 kg can	LGET 2/1



### Important note:

LGET 2 is a fluorinated grease and is not compatible with other greases, oils and preservatives (except LGED 2). Therefore, very thorough cleaning of bearings and systems is essential before applying fresh grease.

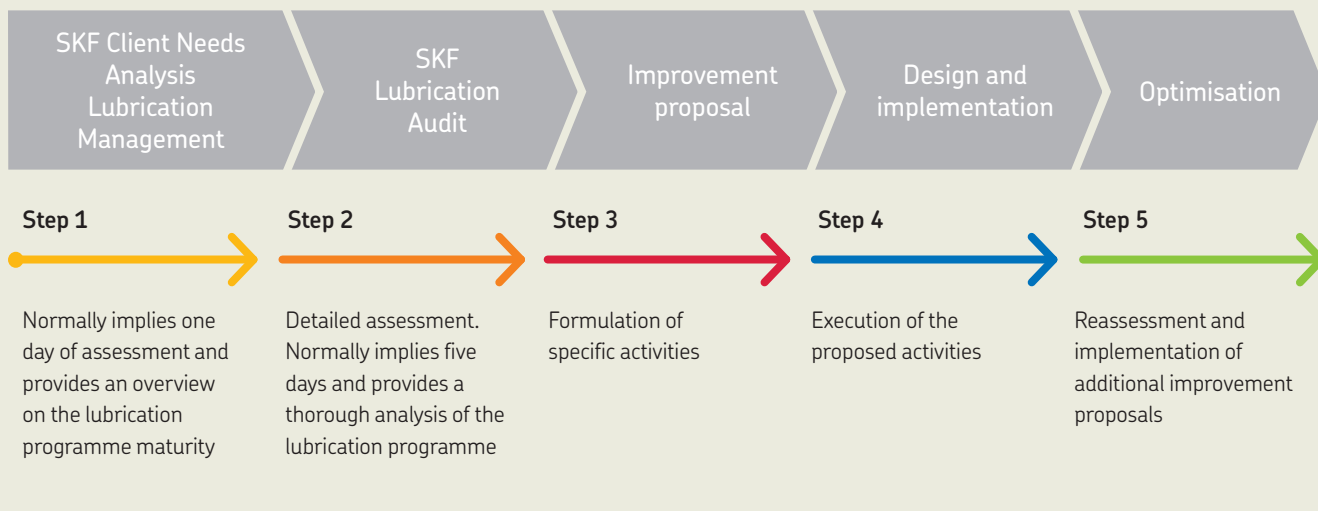
## Technical data

Designation	LG2T 2/(pack size)		
DIN 51825 code	KFK2U-40	Corrosion protection	
NLGI consistency class	2	Emcor:	
Thickener	PTFE	- standard ISO 11007	1-1 max.
Colour	Off white	Water resistance	
Base oil type	Synthetic (fluorinated polyether)	DIN 51 807/1, 3 hrs at 90 °C	0 max.
Operating temperature range	-40 to +260 °C (-40 to +500 °F)	Oil separation	
Dropping point DIN ISO 2176	>300 °C (>570 °F)	DIN 51 817, 7 days at 40 °C, static, %	13 max. 30 hrs at 200 °C (390 °F)
Base oil viscosity		Copper corrosion	
40 °C, mm <sup>2</sup> /s	400	DIN 51 811	1 max. at 150 °C (300 °F)
100 °C, mm <sup>2</sup> /s	38	Rolling bearing grease life	
Penetration DIN ISO 2137		ROF test	>1 000 <sup>1)</sup> at 220 °C (428 °F)
60 strokes, 10 <sup>-1</sup> mm	265-295	L <sub>50</sub> life at 10 000 r/min., hrs	
Mechanical stability		EP performance	
Roll stability,		4-ball test,	
50 hrs at 80 °C, 10 <sup>-1</sup> mm	±30 max. 130 °C (265 °F)	welding load DIN 51350/4, N	8 000 min.

<sup>1)</sup> Typical value

## Lubrication management

Just as asset management takes maintenance to a higher level, a lubrication management approach allows lubrication to be seen from a wider point of view. This approach helps to effectively increase machine reliability at a lower overall cost.



[skf.com](http://skf.com) | [mapro.skf.com](http://mapro.skf.com) | [skf.com/lubrication](http://skf.com/lubrication)

© SKF is a registered trademark of the SKF Group.

© SKF Group 2017

The contents of this publication are the copyright of the publisher and may not be reproduced (even extracts) unless prior written permission is granted. Every care has been taken to ensure the accuracy of the information contained in this publication but no liability can be accepted for any loss or damage whether direct, indirect or consequential arising out of the use of the information contained herein.

PUB MP/P8 12046/2 EN · June 2017

Certain image(s) used under license from Shutterstock.com.